

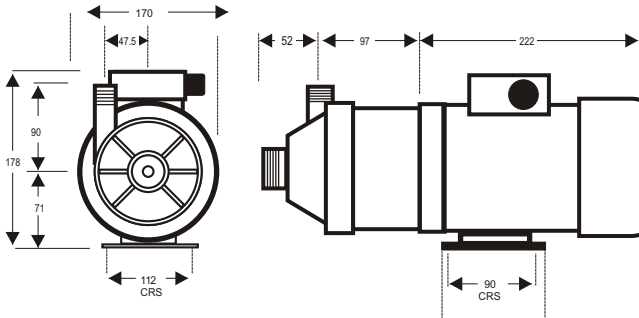


# TE-6P-MD

## DIMENSIONAL SCHEMATIC, PERFORMANCE AND PARTS LIST

### DIMENSIONS mm

not to scale  
specifications are subject to change



Inlet: 1" BSP.F  
Outlet: 3/4" BSP.M

Details may change depending upon the motor specified

### ELECTRICAL DATA

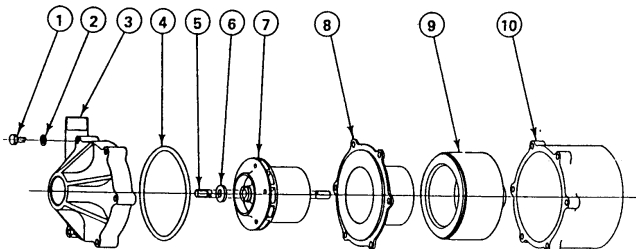
Single phase dual voltage and dual frequency. Manufactured by Tyco Electronics.

Model: HRA352HPNATFDAZ  
Volts A: 100 - 120  
Volts B: 220 - 240  
WO: 330 - 550  
RPM: 2800 - 3400  
Phase: single  
Hz: 50/60  
Rotation: C.W.D.E  
Rating: CR  
Enclosure: T.E.F.V.  
IP Number:55  
F. Load amps: 4.5 - 7.2

UL File: E79942

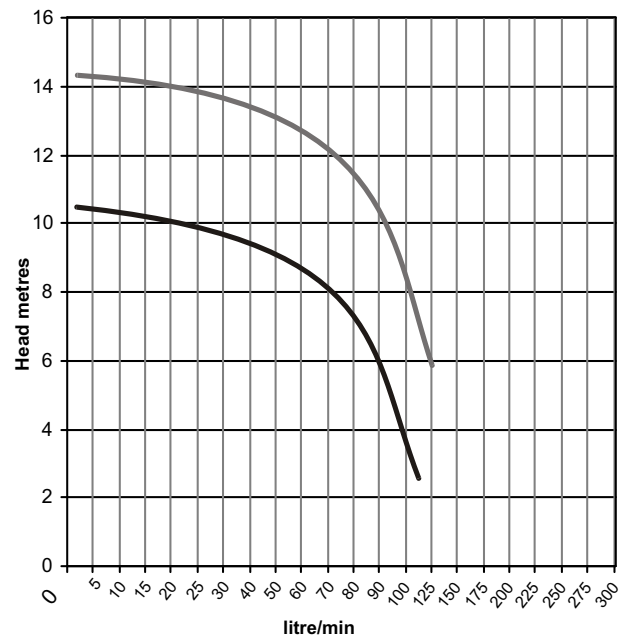
See Page 2 for wiring instructions

### PARTS LIST



ITEM	DESCRIPTION	NOS	CODE
1	HOUSING SCREW ST/STEEL	6	0160-101-UK
2	HOUSING WASHER ST/STEEL	6	0160-201-UK
3	PUMP HOUSING P.P.	1	0153-052-10
4	VITON 'O' RING	1	0153-015-UK
5	CERAMIC SPINDLE	1	0153-007-10
6	CERAMIC THRUST WASHER	1	0155-009-10
7	IMPELLER ASSY W/RULON BUSH	1	0153-003-04
8	IMPELLER HOUSING P.P.	1	0153-072-01
9	DRIVE MAGNET ASSY (14mm bore)	1	0153-035-02
10	MOTOR BRACKET	1	0001-060-UK
11	BRACKET FIXING SCREWS	4	0160-100-UK
12	BRACKET FIXING WASHERS	4	0160-200-UK
13	WET END ASSY ITEMS 1-8		0060-111-11
14	PUMP HEAD ASSY ITEMS 1-12		P060-111-112

### PERFORMANCE



Tests obtained with water 1.0 SG  
 — 60 hz 3480 rpm 230 volts  
 — 50 hz 2900 rpm 230 volts